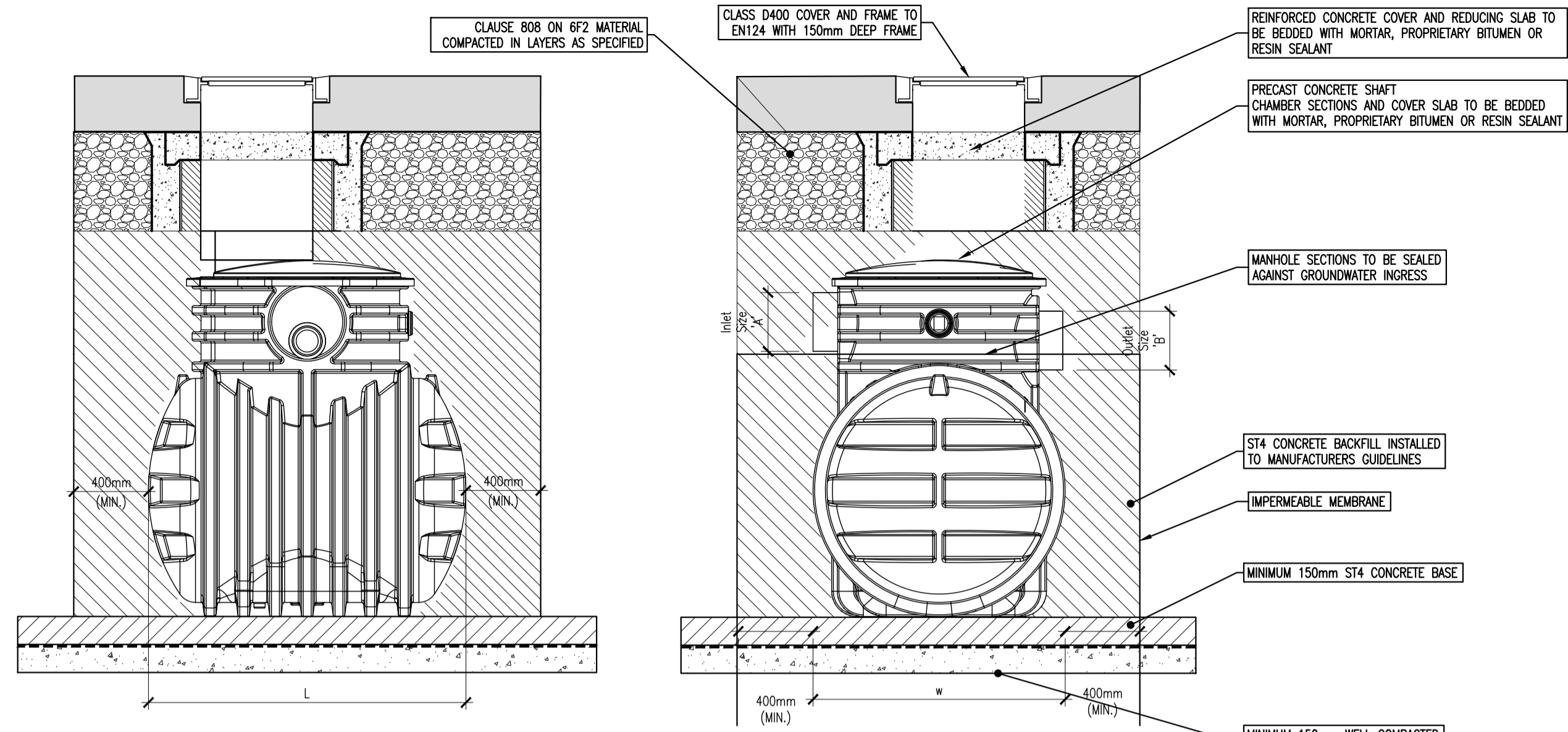
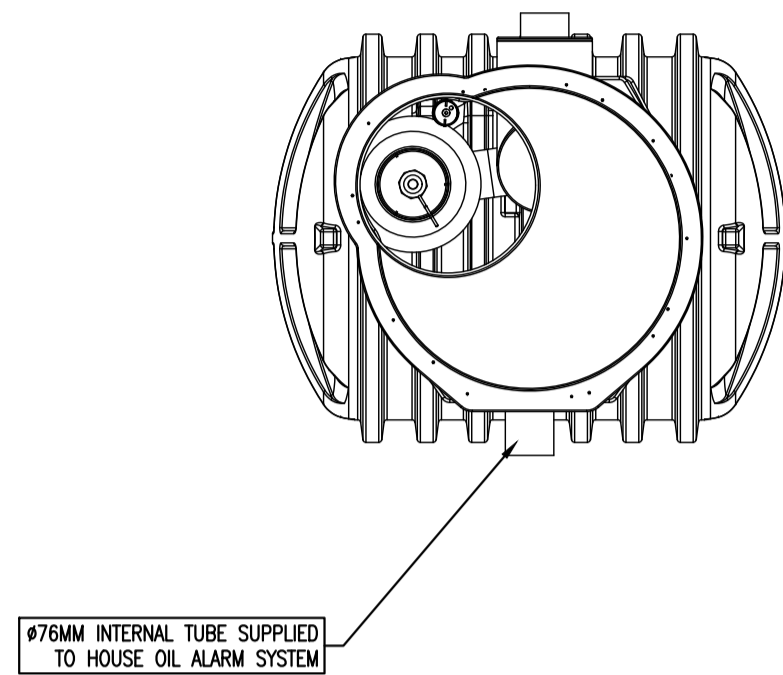


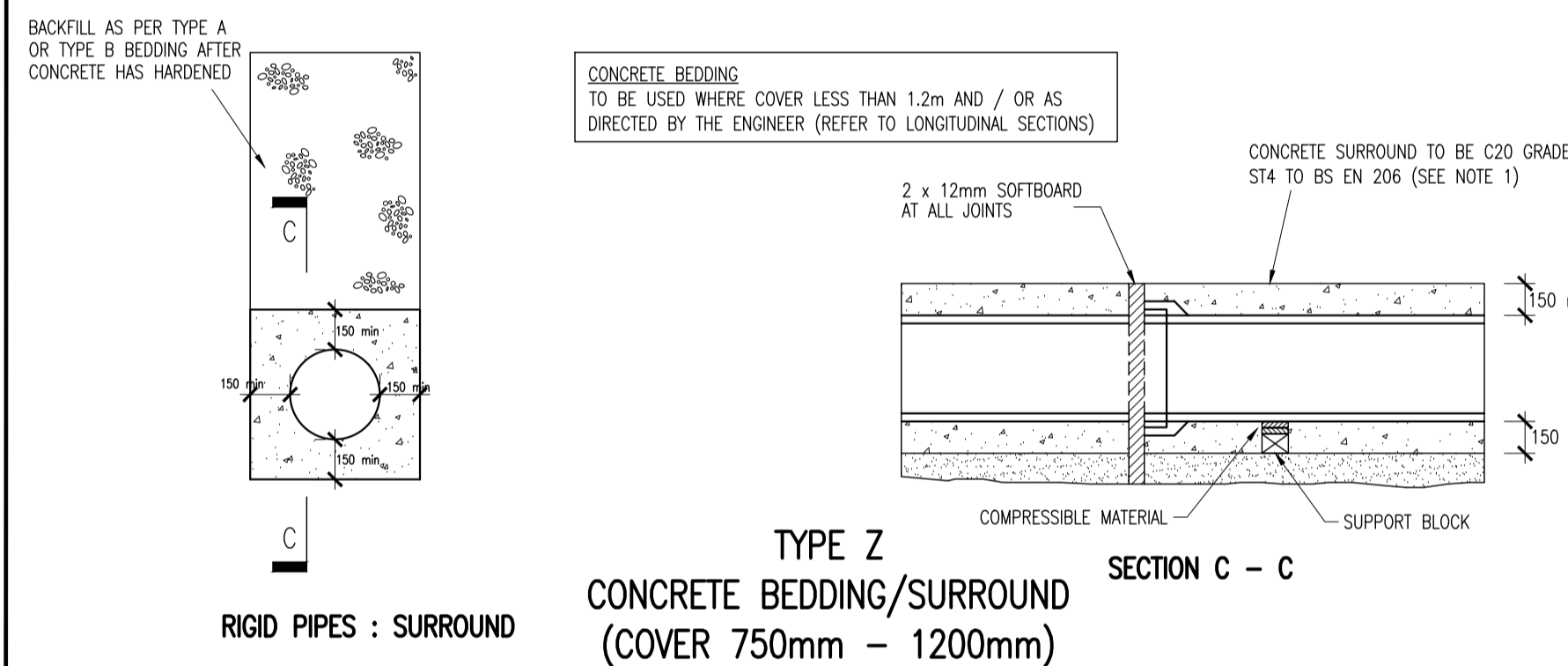
FLOW CONTROL MANHOLE DETAIL  
SCALE 1:25

DIMENSIONS

UNIT	Length L(mm)	Width W(mm)	NOMINAL FLOW	STD. PIPES	FALL ACROSS UNIT	INLET SIZE 'A'	INLET SIZE 'B'
NSFA 010	2610	1225	10 L/S	200	100	225	225

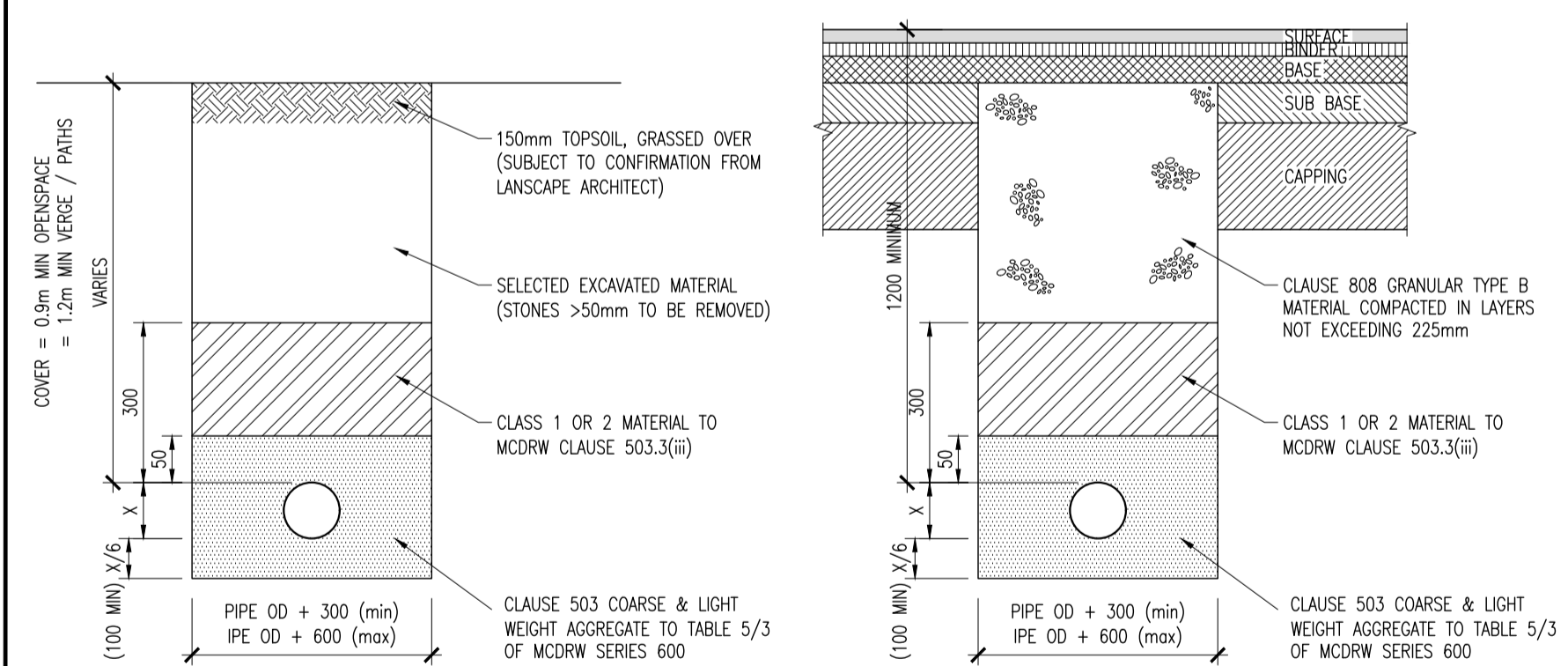


FULL RETENTION OIL SEPARATOR - TYPICAL INSTALLATION DETAIL  
SCALE 1:25



RIGID PIPES : SURROUND

TYPE Z  
CONCRETE BEDDING/SURROUND  
(COVER 750mm - 1200mm)



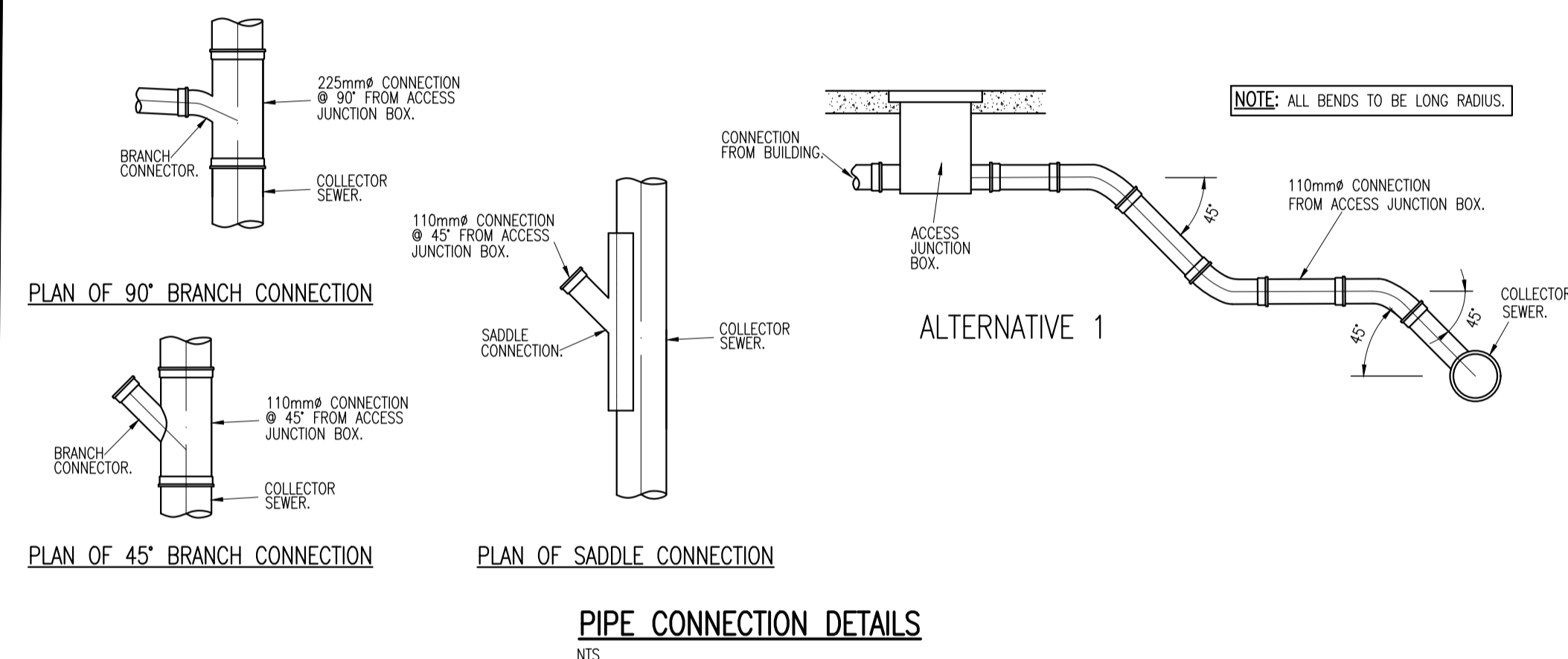
A - BEDDING/BACKFILL DETAIL  
ACROSS OPEN SPACE (SIMILAR)

B - BEDDING/BACKFILL DETAIL  
IN ROADWAYS/VERGES/PATHS

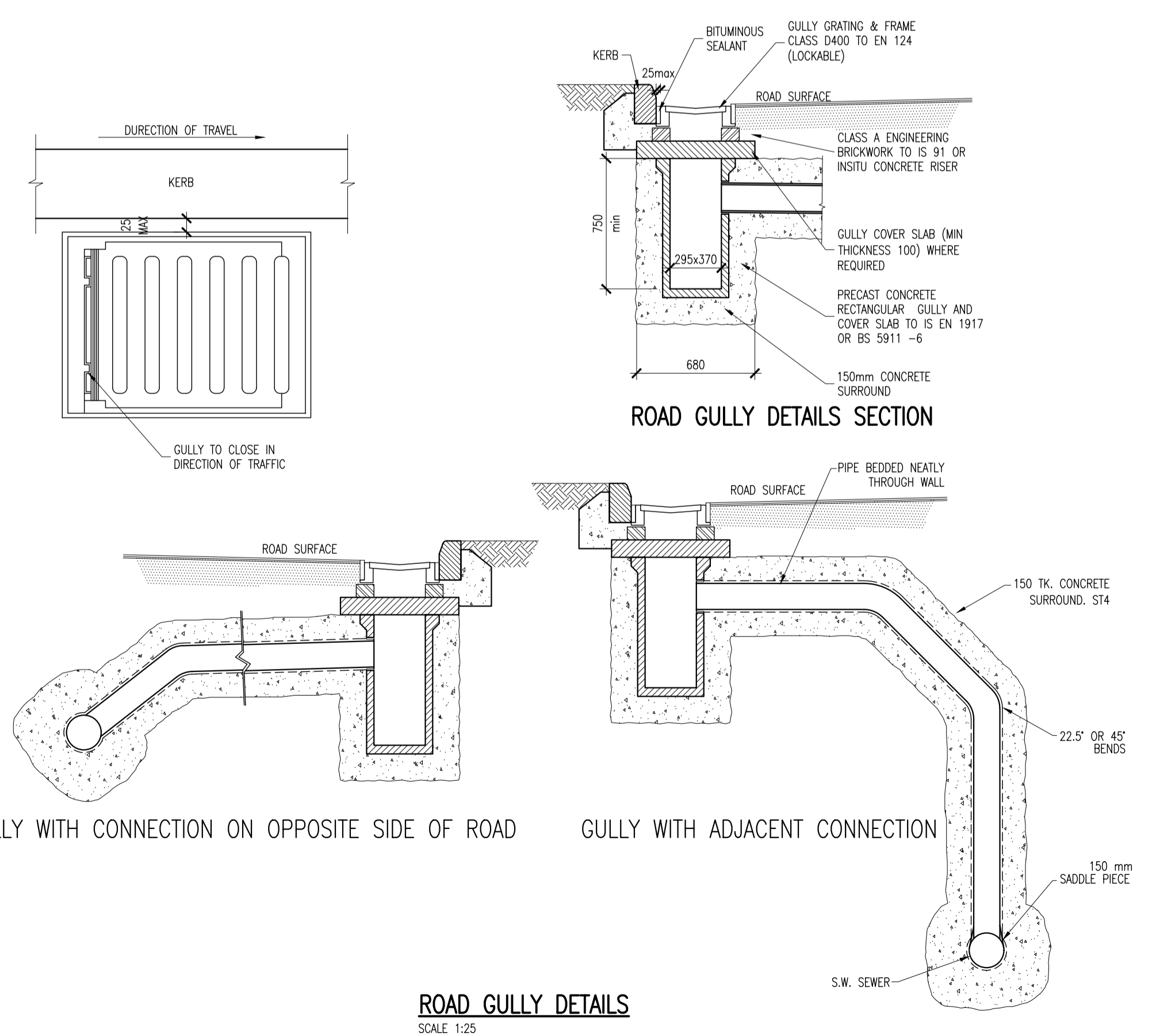
C - TRENCH BACKFILL/REINSTATEMENT DETAIL  
IN EXISTING ROADS  
(REFER TO 190226-DBFL-CS-SP-DR-C-5003)

TYPE S  
(COVER > 1.2 METRES TO CROWN)

PIPE BEDDING DETAILS  
SCALE 1:25



PIPE CONNECTION DETAILS  
NTS

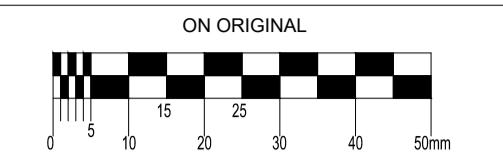


GULLY WITH CONNECTION ON OPPOSITE SIDE OF ROAD

GULLY WITH ADJACENT CONNECTION

ROAD GULLY DETAILS  
SCALE 1:25

© COPYRIGHT OF THIS DRAWING IS RESERVED BY DBFL CONSULTING ENGINEERS. NO PART SHALL BE REPRODUCED OR TRANSMITTED WITHOUT THEIR WRITTEN PERMISSION.



NOTES:

- WHERE ROCKS OR OTHER HARD TRENCH BOTTOM IS ENCOUNTERED, THE FIGURE DENOTED BY \* IS TO BE DOUBLED.
- TYPE 1 GRANULAR MATERIAL : BROKEN STONE OR GRAVEL TO PASS 10mm SIEVE AND BE RETAINED ON 5mm SIEVE.
- TYPE 2 GRANULAR MATERIAL : BROKEN STONE OR GRAVEL TO PASS 10mm - 25mm SIEVE, ACCORDING TO PIPE SIZE, (SEE TABLE) AND BE RETAINED ON 5mm SIEVE.
- CLAUSE 601 S.R.W. BACKFILL : UNIFORM HEAVILY COMPACTED MATERIAL FREE FROM TREE ROOTS, VEGETABLE MATTER, BUILDING DEBRIS, AND FROZEN SOIL AND EXCLUDING CLAY LUMPS RETAINED ON A 75mm SIEVE AND STONES RETAINED ON A 37.5mm SIEVE.
- RIGID PIPES SHALL MEAN CAST OR SPUN IRON, CONCRETE OR CLAY.
- GULLY GRATINGS AND FRAMES SHALL COMPLY WITH THE REQUIREMENTS OF I.S./E.N./124 1994. GULLIES SHALL BE CLASS D400.
- GULLY WALLS SHALL BE CONSTRUCTED IN CLASS 30N/mm<sup>2</sup> PRECAST OR INSITU CONCRETE OR ALTERNATIVELY IN SOLID CONCRETE BLOCKS DESIGNATED S10, STRENGTH 10N/mm<sup>2</sup>
- ALL PIPES TO BE BEDDED IN ACCORDANCE WITH MANUFACTURERS RECOMMENDATIONS
- SURFACE WATER SEWERS TO BE CLASS H CONCRETE TO IS EN1916 AND IS 6 2004.

rev	date	description	by	chkd.
P01	25-08-21	PLANNING	RMC	EDA

client approval: A - Approved, B - Approved with comments, C - Do not use

suitability: S2 - INFORMATION, PLANNING

DBFL Consulting Engineers  
Civil, Structural & Transportation Engineering  
www.dbfl.ie

DUBLIN OFFICE: Ormond House, Upper Ormond Quay, Dublin 7, D07 W704  
PHONE: +353 (0)1 404 4000  
CORK OFFICE: Phoenix House, Monahan Road, Cork, T12 H1KX  
PHONE: +353 (0)21 2054538  
WATERFORD OFFICE: Suite 10 The Arkun, Martiana Gate, Canada Street, Waterford, X91 W028  
PHONE: +353 (0)51 909 500

project ref.

SANDFORD ROAD, MILLTOWN

drawing title

DRAINAGE TYPICAL DETAILS SHEET 2

client

SANDFORD LIVING LIMITED

designed by: BK, author: ICD, scale: AS NOTED, sheet size: A1

drawing no.: 190226-DBFL-CS-SP-DR-C-5002, revision: P01